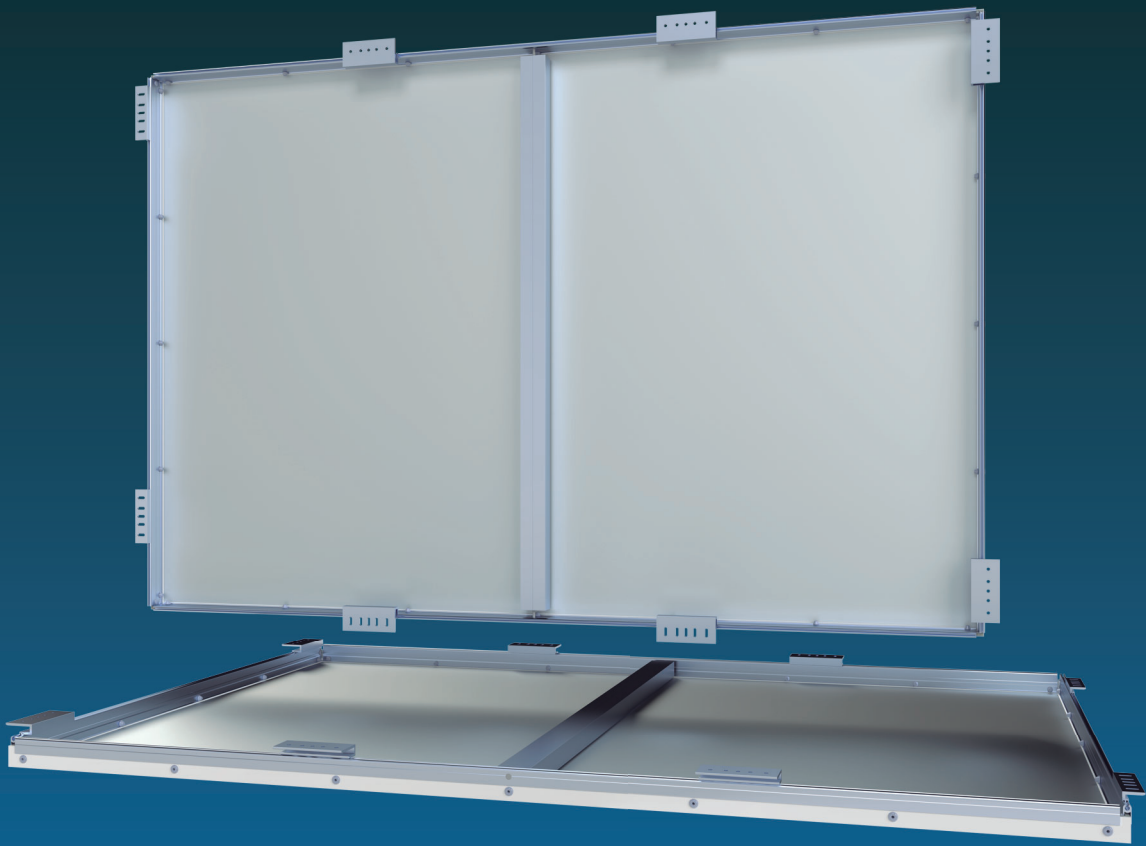


# larcore<sup>®</sup> A2

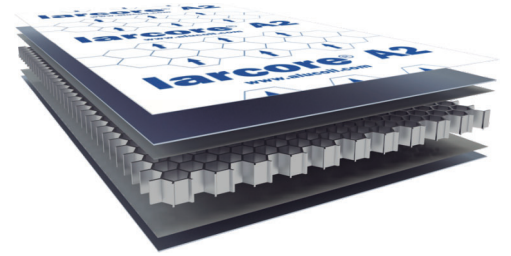
Aluminium honeycomb panel for architectural solutions



INSTALLATION SYSTEM  
**Hidetech<sup>®</sup> LIGHT**

# larcore® 6 mm

## Aluminium honeycomb panels for architectural solutions



**Hideteck® LIGHT** system for **larcore® A2** 6mm honeycomb panel. Architectural ceilings and façades.

Brackets, vertical profiles (mullions), clips and perimeter profile are extruded in aluminum EN AW 6063 T66 alloy, one of the most resistant. System support is based on vertical profiles (mullions) with an asymmetric T-shaped section, connected to the building by L-shaped section brackets.

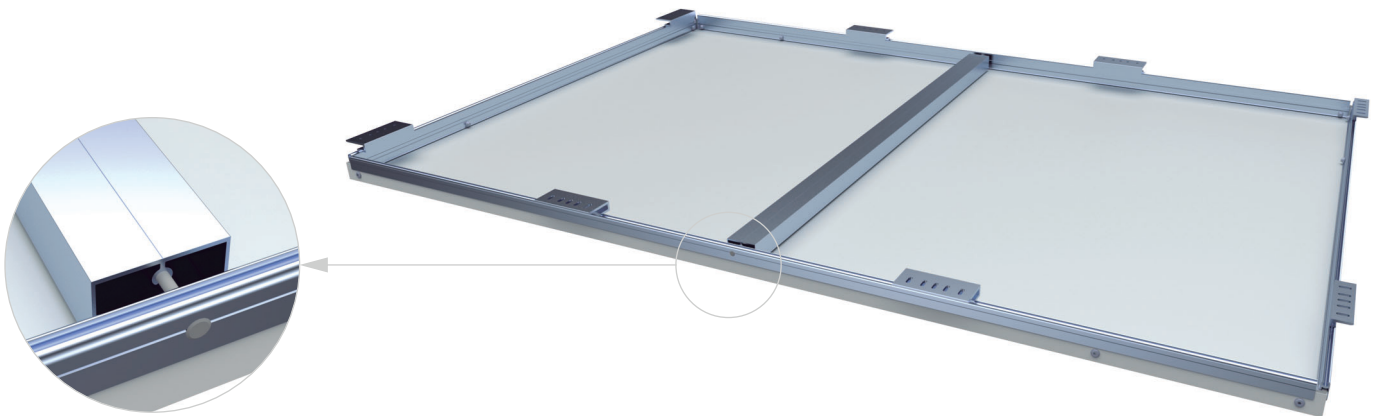
**larcore® A2** 6mm panel is folded in cassettes. Exposed edges are closed on the perimeter by a profile used for waterproofing the core and for fixing cassettes to mullions. **Perimeter profile** is connected to cassettes edges using rivets. Those same rivets will also be placed at corners for assuring cassette forming. This perimeter profile has a guide rail for sliding in it special fixing clips. **Clips** will be placed and screwed against vertical profiles. System movement availability is assured by slotted-holes performed in clips and brackets too, and through the sliding possibility of clips inside the guide rail.

**CERTIFICATION:** EPD® Environmental product declaration

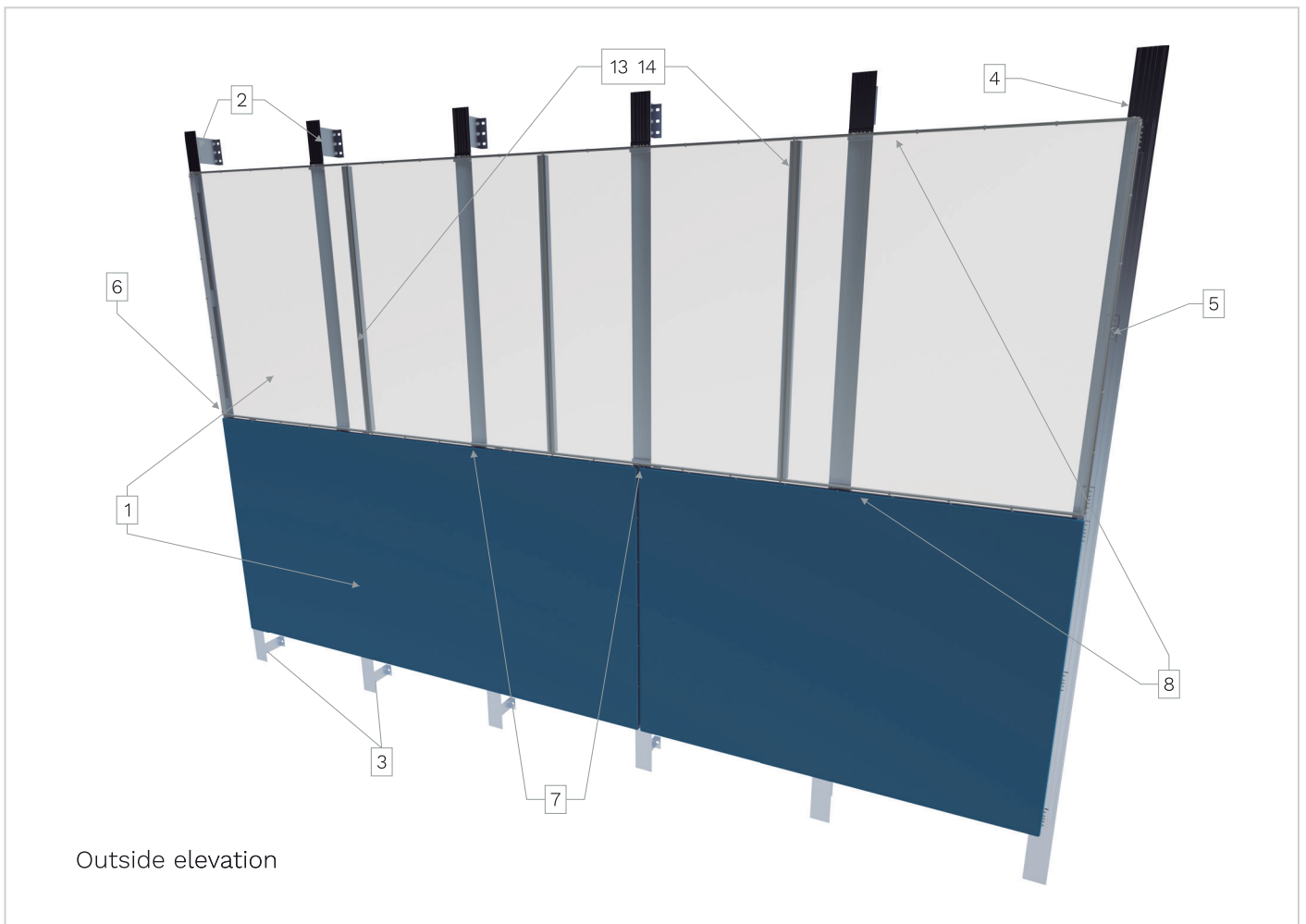
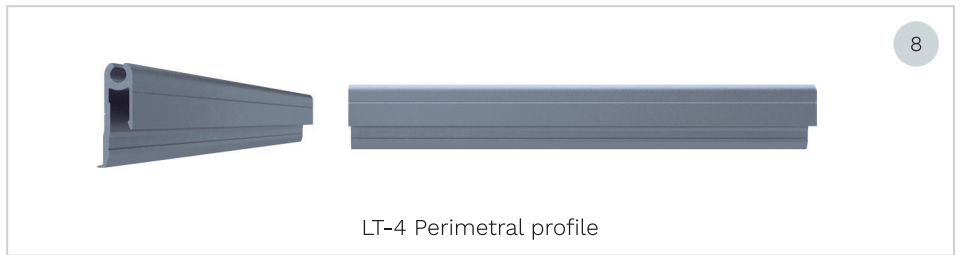
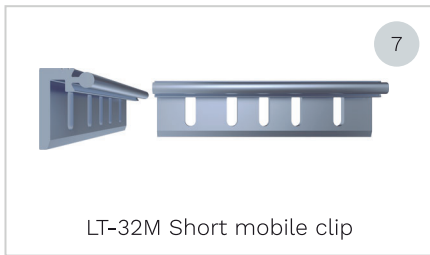
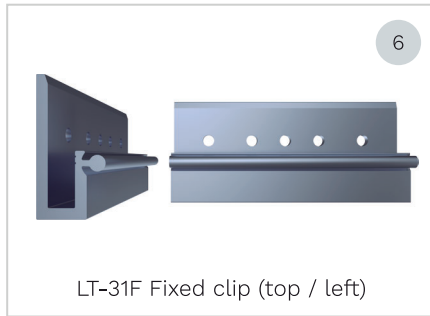
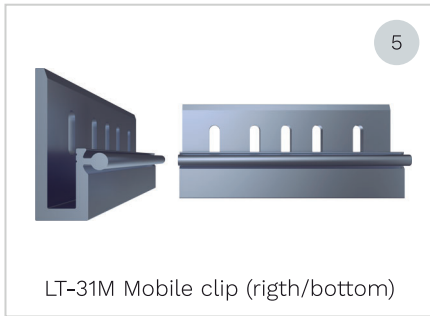
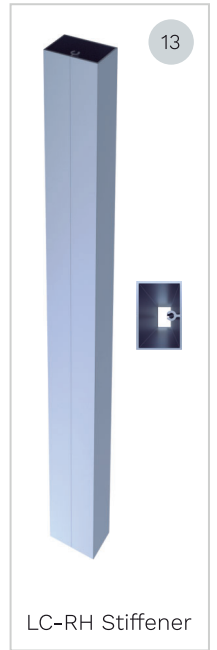
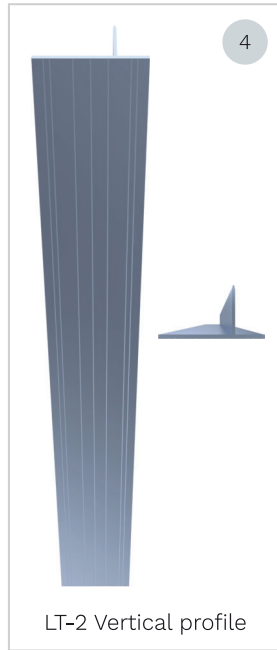
**TESTING:** Large scale test BS 8414-1 & BS 8414-2, with **Alucoil® Hideteck® LIGHT** installation system.

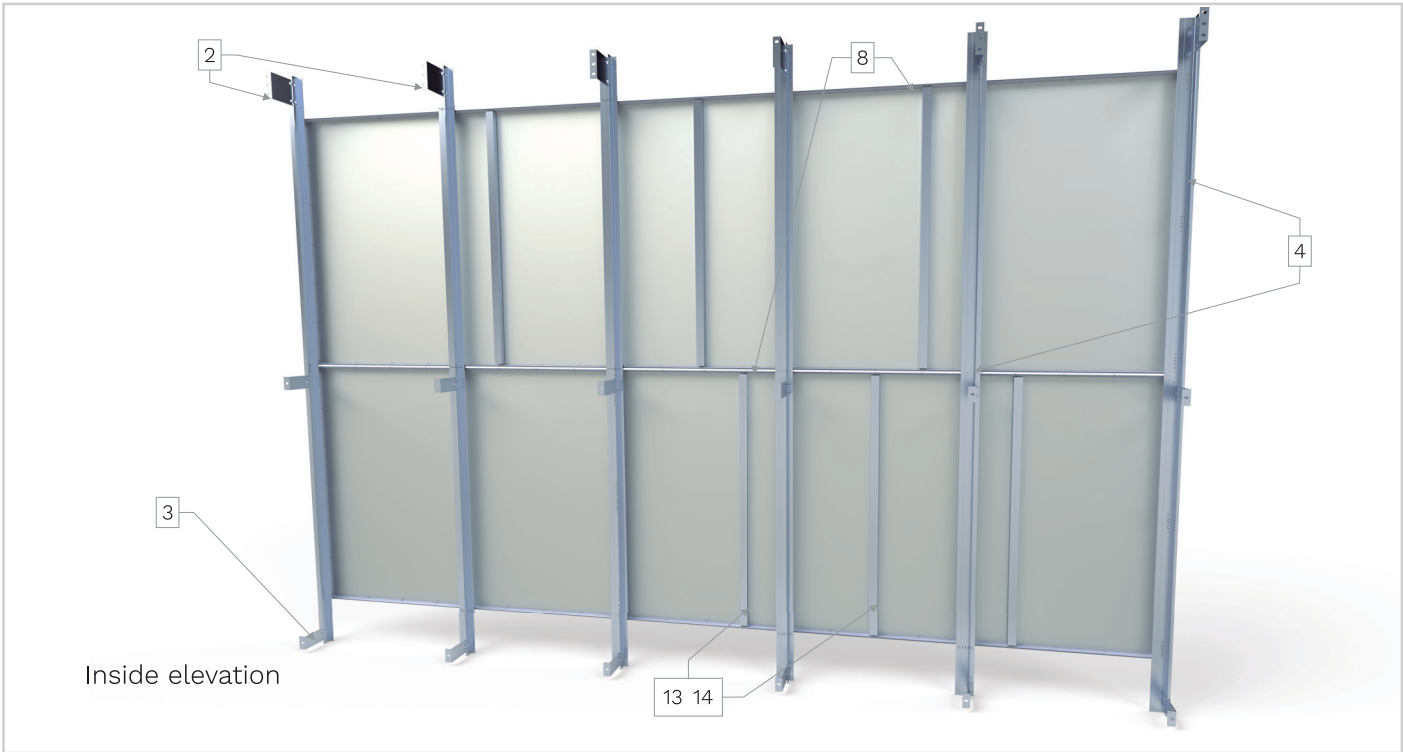
**CLASSIFICATIONS:** Same composition and quantity of adhesive as **larcore® A2** 14 mm + **HideTech® PRO** installation system by **Alucoil®**, classified A2-s1, d0 according to EN 13501-1, and as **larcore® A2** 8 and 25 mm, classified M0 according to NF P 92-501.

The installation of **larcore® A2** panel must guarantee its watertightness.

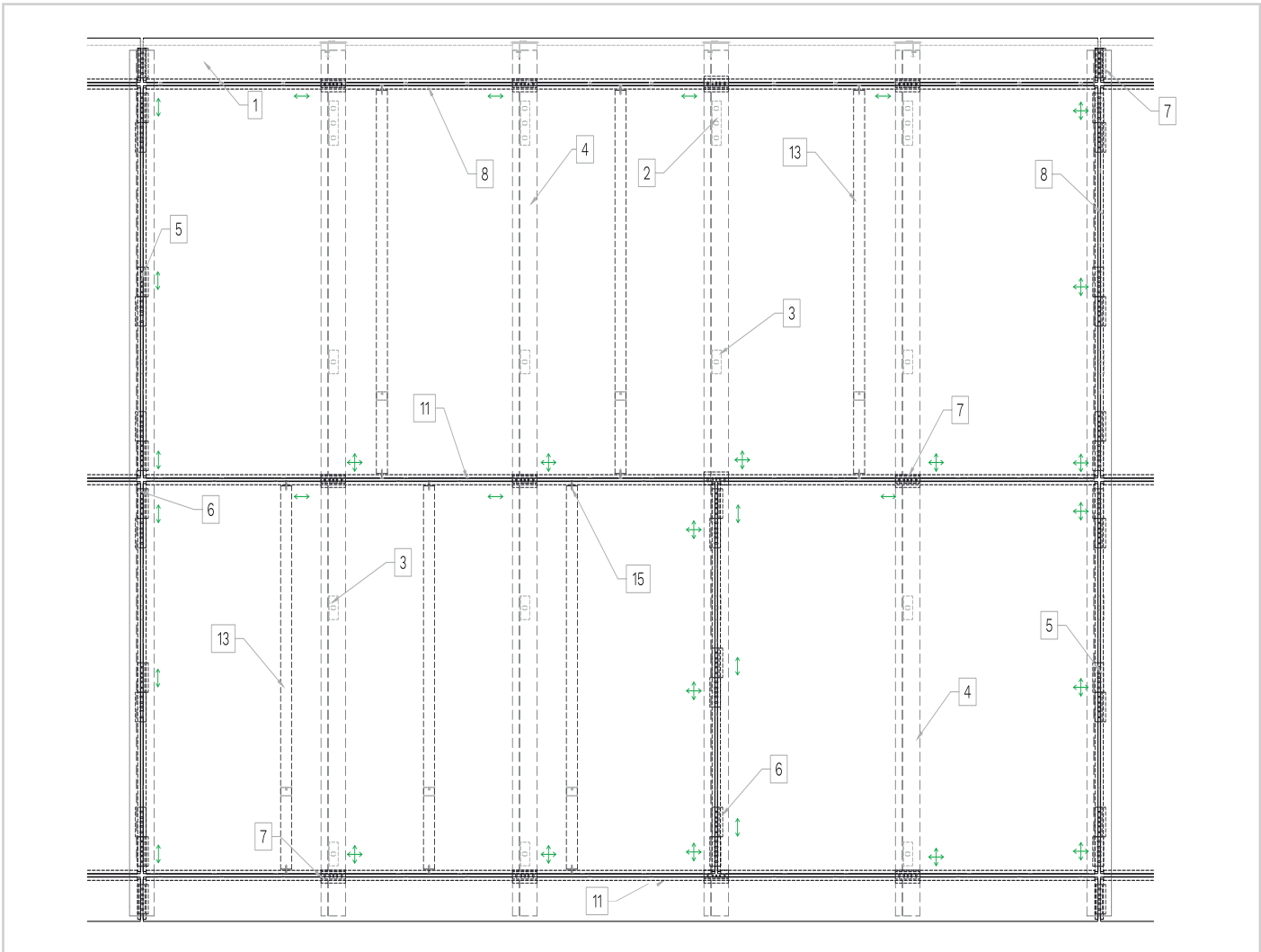


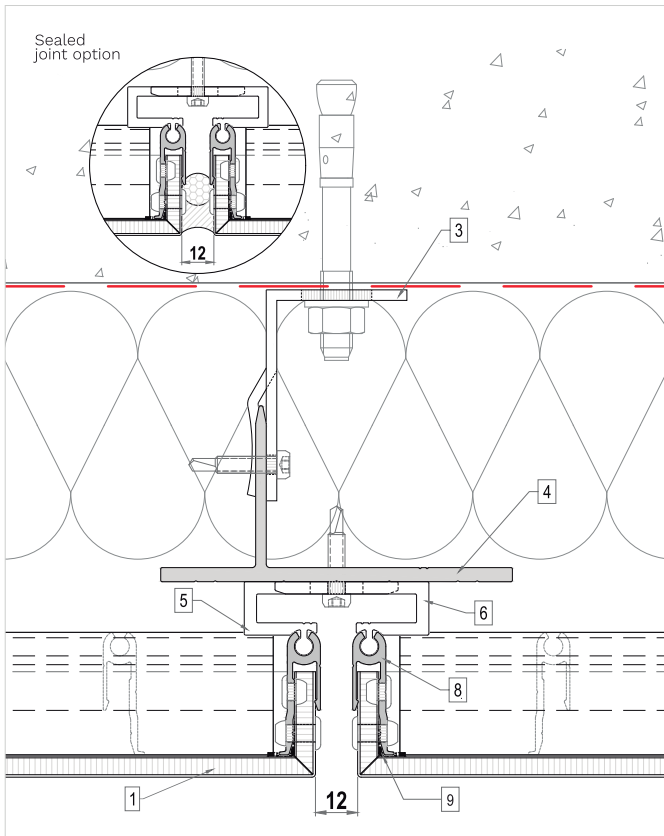
# larcore® A2 6 mm + Hidetech® LIGHT system



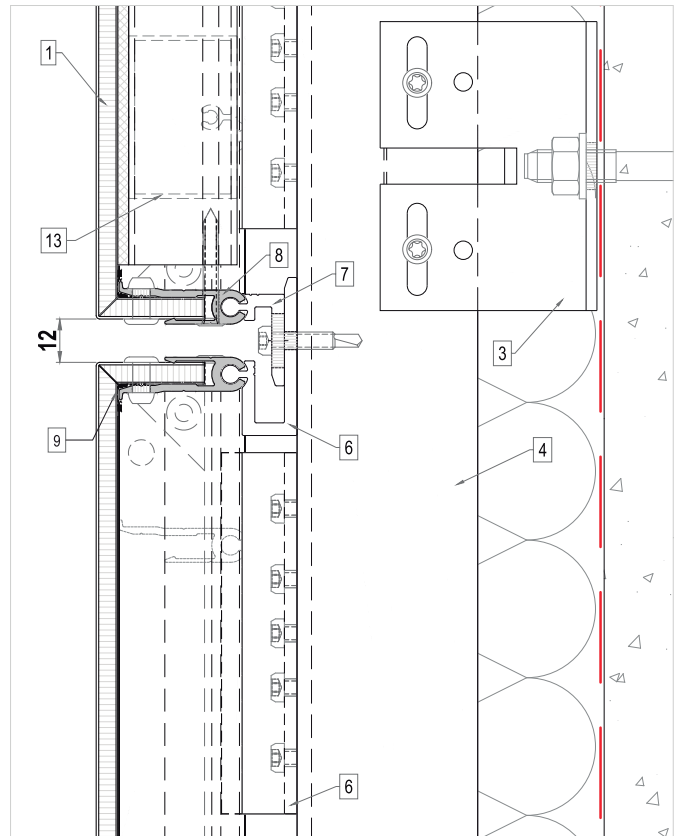


- |   |  |  |   |
|---|--|--|---|
| 1. <b>larcore® A2</b> 6 mm Panel            | 6. <b>LT-31F</b> Fixed clip (top/left) | 11. Standard rivet                     | ↔ Horizontal dilation point<br>↑↓ Vertical dilation point<br>⊕ Dilation point |
| 2. <b>LT-1A</b> Wind weight bracket         | 7. <b>LT-32M</b> short mobile clip     | 12. <b>EJOT TORX T25</b> special screw |   |
| 3. <b>LT-1B</b> Wind bracket                | 8. <b>LT-4</b> perimetral profile      | 13. <b>LC-RH</b> stiffener             |   |
| 4. <b>LT-2</b> Vertical profile             | 9. Silicone                            | 14. Sika Tack Panel 50 adhesive        |   |
| 5. <b>LT-31M</b> Mobile clip (right/bottom) | 10. Waterproofing rivet                | 15. <b>INDEX</b> flat head screw       |   |

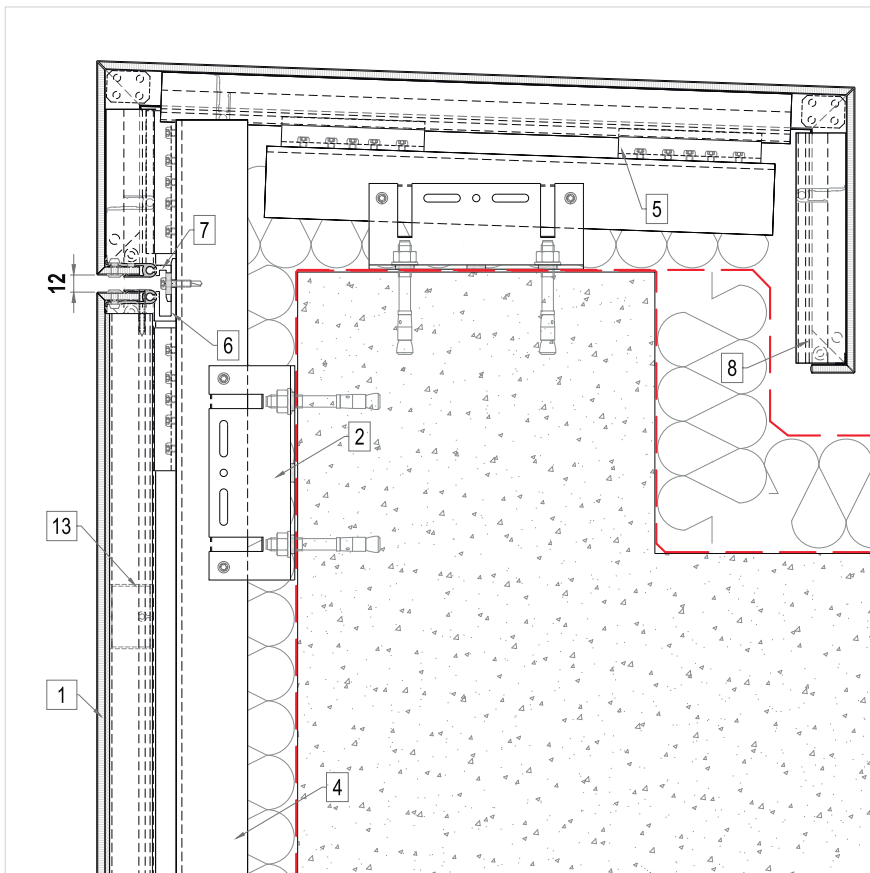




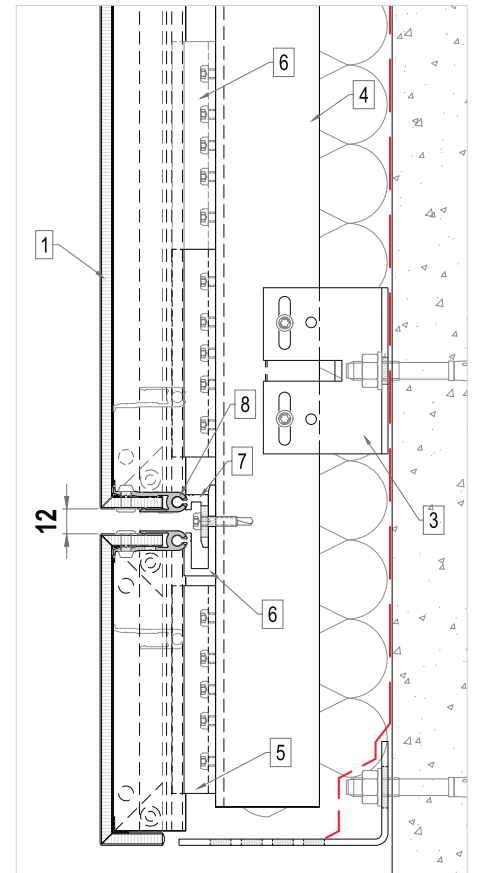
VERTICAL JOINT



HORIZONTAL JOINT



PARAPET DETAIL



SECTION BASE DETAIL

- |                                     |   |  |                                 |
|-------------------------------------|---|--|---------------------------------|
| 1. <b>larcore® A2</b> 6 mm Panel    | 5. <b>LT-31M</b> Mobile clip (right/bottom) | 9. Silicone                            | 13. <b>LC-RH</b> stiffener      |
| 2. <b>LT-1A</b> Wind weight bracket | 6. <b>LT-31F</b> Fixed clip (top/left)      | 10. Waterproofing rivet                | 14. Sika Tack Panel 50 adhesive |
| 3. <b>LT-1B</b> Wind bracket        | 7. <b>LT-32M</b> short mobile clip          | 11. Standard rivet                     | 15. INDEX flat head screw       |
| 4. <b>LT-2</b> Vertical profile     | 8. <b>LT-4</b> perimetral profile           | 12. <b>EJOT TORX T25</b> special screw |                                 |

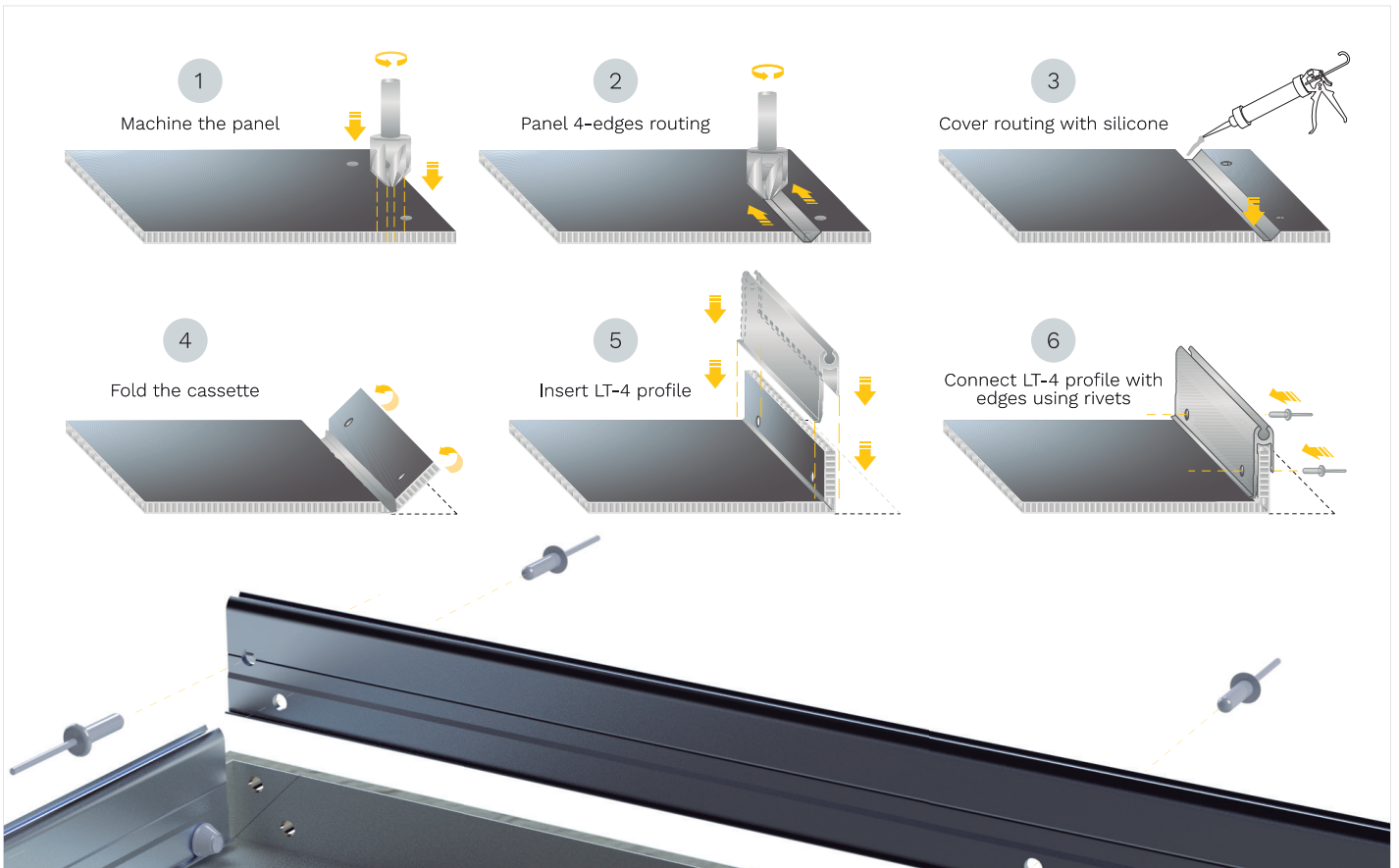
## System main features

**larcore® A2** 6 mm is a fantastic solution for slowing down fire spreading in buildings.

**larcore® A2** honeycomb panels have a high rigidity, allowing a significant reduction of substructure quantity, comparing to traditional composite panel solutions.

Due to fixing configuration, based in vertical profiles and point elements, cavity ventilation is assured through horizontal open-joints. **HideTech® LIGHT** system allows single panel replacement.

## How to shape the cassette?



Note:

**larcore® A2** used in external outdoor facades must be installed with a riveted perimeter double edge closing system or any other solution which guarantees the water tightness of the panel under the customer's responsibility.



**Wind load tables:** ( $N/m^2 = Pa$ ) and ( $kg/m^2$ )

**LT-2:** Vertical profile (mullions) / **LT-31:** Clip / **LC-RH:** Stiffeners

DIMENSIONS (mm)		Wind load ( $N/m^2$ ) - ( $kg/m^2$ )								
		1000 $N/m^2$ - 100 $kg/m^2$			2000 $N/m^2$ - 200 $kg/m^2$			3000 $N/m^2$ - 300 $kg/m^2$		
Length	Height	LT-2	LT-31	LC-RH	LT-2	LT-31	LC-RH	LT-2	LT-31	LC-RH
500	500	2	2	0	2	2	0	2	2	0
1000		2	2	0	2	2	0	2	2	0
1500		2	2	0	2	2	0	2	2	0
2000		2	2	0	3	2	0	3	2	0
2500		3	2	0	3	2	0	3	2	0
3000		3	2	0	3	2	0	3	2	0
3500		3	2	0	3	2	0	3	2	0
4000		3	2	0	3	2	0	3	2	0
4500		3	2	0	3	2	0	4	2	0
5000		3	2	0	3	2	0	4	2	0
5500		3	2	0	4	2	0	4	2	0
6000		3	2	0	4	2	0	4	2	0

DIMENSIONS (mm)		Wind load ( $N/m^2$ ) - ( $kg/m^2$ )								
		1000 $N/m^2$ - 100 $kg/m^2$			2000 $N/m^2$ - 200 $kg/m^2$			3000 $N/m^2$ - 300 $kg/m^2$		
1000	1000	2	2	0	2	2	0	2	2	0
1500		2	2	0	2	2	0	3	2	0
2000		2	2	0	3	2	0	3	2	0
2500		3	2	0	3	2	0	3	2	0
3000		3	2	0	3	2	0	3	2	0
3500		3	2	0	3	2	0	4	2	0
4000		3	2	0	4	2	0	4	2	0
4500		3	2	0	4	2	0	4	2	0
5000		3	2	0	4	2	0	5	2	0
5500		4	2	0	4	2	0	5	2	0
6000		4	2	0	5	2	0	5	2	0

DIMENSIONS (mm)		Wind load ( $N/m^2$ ) - ( $kg/m^2$ )								
		1000 $N/m^2$ - 100 $kg/m^2$			2000 $N/m^2$ - 200 $kg/m^2$			3000 $N/m^2$ - 300 $kg/m^2$		
1500	1500	2	2	0	3	2	0	3	2	0
2000		3	2	0	3	2	0	3	3	1
2500		3	2	0	3	3	1	3	3	1
3000		3	2	0	3	3	1	4	3	2
3500		3	2	0	4	3	2	4	3	2
4000		3	2	0	4	3	2	5	3	3
4500		3	2	0	4	3	2	5	3	3
5000		4	2	0	5	3	3	5	3	3
5500		4	2	0	5	3	3	6	3	4
6000		4	2	0	5	3	3	6	3	4

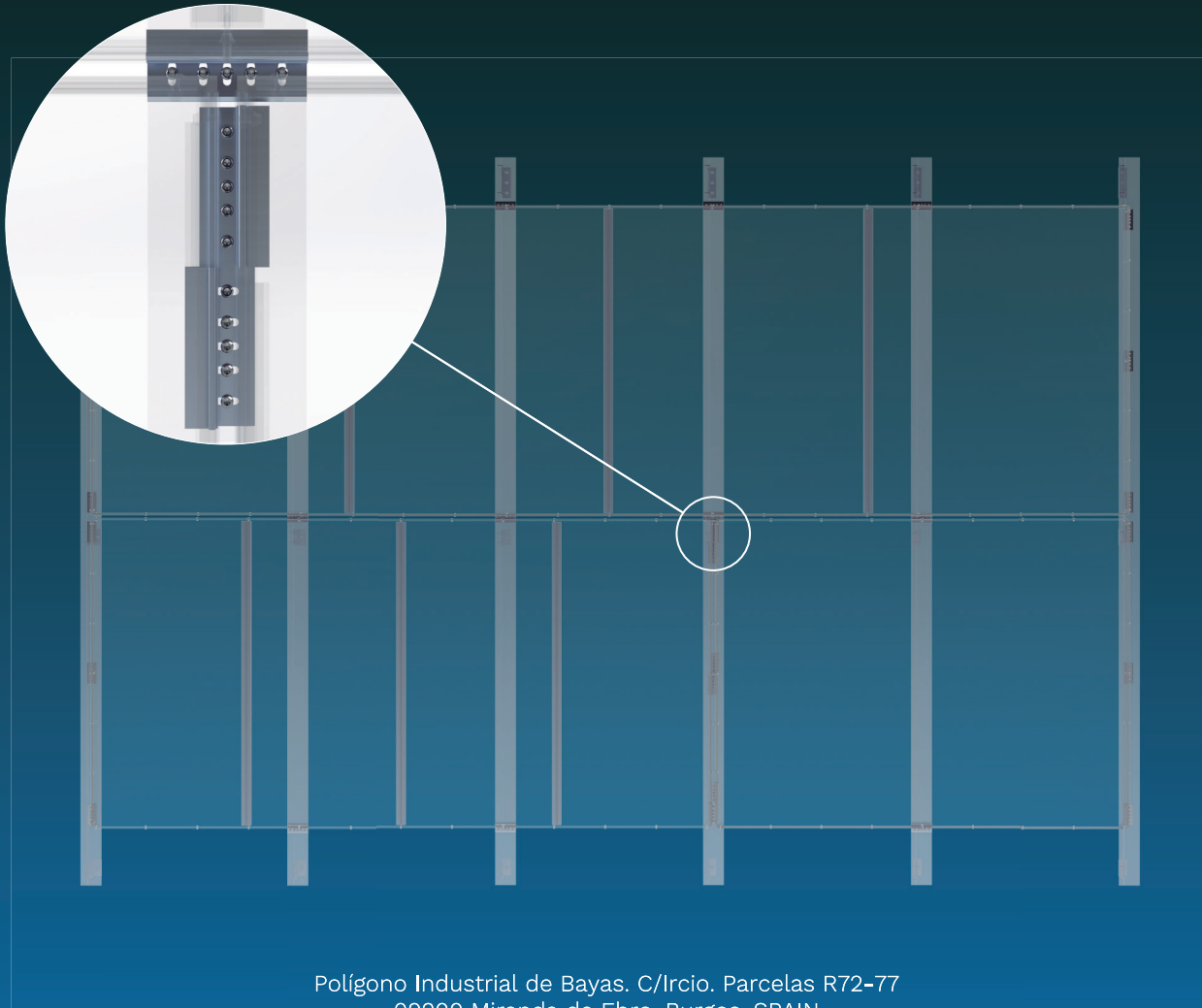
Wind loads shown in this chart are DESIGN wind loads. Therefore, if project CHARACTERISTIC wind load is known, before entering the chart, it has to be factorized by security coefficient stated in current standards. In Spain, CTE indicates that security coefficient should be 1'50. Example: characteristic project load  $q_k = 1000 Pa$ . Value used to enter the chart would be design load  $q_d = 1000 Pa \times 1'50 = 1500 Pa$ . If an intermediate value is obtained and it does not match those shown in the chart, immediate superior value should always be used, and this should be done with load values, dimension values and substructure results.

Tables are referred to HORIZONTAL modulations. For VERTICAL ones, turn 90° the panel and transform it into horizontal. Mullions number will be vertical clips number, clips number will be mullions number and vertical stiffeners number will turn into horizontal stiffeners number. Example: panel 1500x4000 mm, characteristic wind load 1333 Pa. Spanish design wind load will be 1333 Pa x 1'50 = 2000 Pa. Search needed substructure in tables for a 4000x1500 mm horizontal panel. Results: 4 mullions (vertical profiles), 3 vertical clips, 2 vertical stiffeners. The substructure for 1500x4000 mm vertical panel will be: 3 mullions, 4 vertical clips, 2 horizontal stiffeners.

**INFORMATIVE chart and values in order to carry out PRELIMINAR calculations. If further study is required on any project, please contact Alucoil's Technical Department.**

# Iarcove® A2

Hidotech® LIGHT Installation system



Polígono Industrial de Bayas. C/Ircio. Parcelas R72-77  
09200 Miranda de Ebro, Burgos. SPAIN  
Tlf: +34 947 333 320 Fax: +34 947 324 913  
info@alucoil.com

Alucoil® S.A.U. reserves the right to change or remove information contained in this brochure without prior notice.  
Please visit us at [www.alucoil.com](http://www.alucoil.com) to check the latest version.