

1.3.1.1

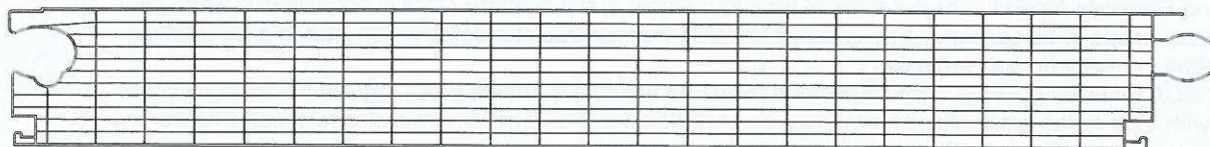
Translucent Building Elements

Product properties

Stand: 06/14

Up-Value from 0.71 W/m²K to 0.77 W/m²K

Depending on horizontal or vertical installation situation as interior or exterior application
According to DIN EN ISO 6946:2008 / DIN EN ISO 10077-2:2008



Flammability classification:

PC 2560-12 ISOCLEAR

Fire class B 2 according to DIN 4102

Building width:

500 mm +/- 1 %

Thickness:

60 mm +/- 1 %

Weight:

approx. 5.8 kg/m²

Number of layers:

12 layers / 11 chambers

Modulus of elasticity:

2,400 N/mm²

Coefficient of linear expansion:

0.065 mm/m/°C

UV admission:

< 1 %, wave length until 380 nm stopped almost a 100 %

Production tolerances:

s. General information

Versions:

Standard:

Colour: crystal, opal antiblind

Colour:



Available in any solid colour similar to RAL

The Color version can be delivered with a minimum quantity of 300 m² without separate surcharges for colour change.

The aforesaid information and our application technological advice in words, written and through tries, are carried out to the best of one's knowledge. This information is non-binding advice even in regards to property rights of third parties. Our advice does not release you from your responsibility to proof self dependently our current advices - especially our safety data sheets and technical information - and to test our products regarding to applicability for the intended system and use. Application, use and handling of our products - produced based on our application technological advice - take place out of our control and therefore you are solely responsible. The sales of our products is effected at our current general sales and delivery conditions.

1.3.1.2

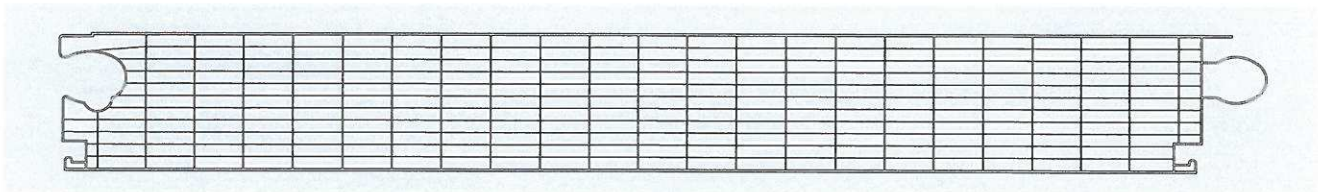
Translucent Building Elements

Product properties - Physical properties

Stand: 06/14

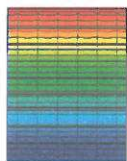
Up-Value from 0.71 W/m²K to 0.77 W/m²K

Depending on horizontal or vertical installation situation as interior or exterior application
According to DIN EN ISO 6946:2008 / DIN EN ISO 10077-2:2008



Up-Values:

Isotherm- and temperature pattern
from -10 °C outside and 20 °C inside
at vertical assembly



Isotherms:

Red: 13°C
Blue: 10°C
Black: 0°C

Installation situation interior:

Up-Value 0.71 W/m²K vertical
Up-Value 0.74 W/m²K horizontal

Installation situation exterior:

Up-Value 0.75 W/m²K vertical
Up-Value 0.77 W/m²K horizontal

The German building approval foresees the calculation of facade and roof areas according to the requirements of DIN 10077-2 (U_{ew}). If additional or divergent national requirements be asked to calculate the thermal protection, these must be respected.

Sound insulation:

Rw 27 dB according to DIN EN ISO 140-3 in testing facility

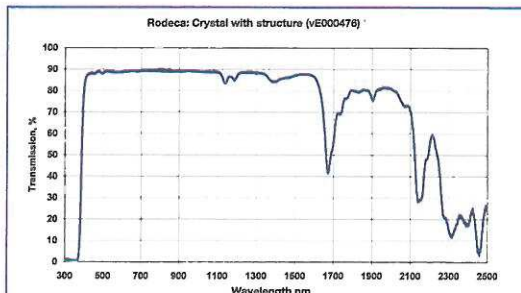
Transmission:

Standard:

Colour: crystal approx. 41 %
Colour: opal antiblind approx. 30 %

Color:

Depending on colour



The measurement of the transmission values was carried out with application of a natural day light lamp of 20,000 Lux in connection with a lux meter Lightmeter MS 1000-300 – measuring range 200 to 50,000 LUX) exemplarily on a 1 mm thick PC.

The aforesaid information and our application technological advice in words, written and through tries, are carried out to the best of one's knowledge. This information is non-binding advice even in regards to property rights of third parties. Our advice does not release you from your responsibility to proof self dependently our current advices - especially our safety data sheets and technical information - and to test our products regarding to applicability for the intended system and use. Application, use and handling of our products - produced based on our application technological advice - take place out of our control and therefore you are solely responsible. The sales of our products is effected at our current general sales and delivery conditions.

1.3.1.3

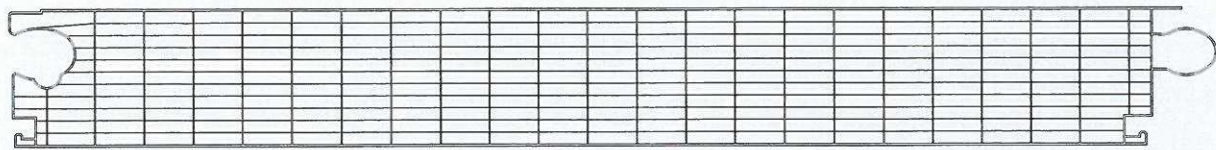
Translucent Building Elements

Product properties - Physical properties

Stand: 06/14

Up-Value from 0.71 W/m²K to 0.77 W/m²K

Depending on horizontal or vertical installation situation as interior or exterior application
According to DIN EN ISO 6946:2008 / DIN EN ISO 10077-2:2008



Solar gain values g

Standard:	Colour: crystal	approx. 43 %
	Colour: opal antiblind	approx. 37 %
Colour:	Depending on colour	

Flammability classifications don't have influence to the aspects of stability.

The RODECA translucent building elements in use with thermally broken or non-thermally broken frame systems have the following system names:

PC 2560-12	For single field constructions
PC 2560-12 AF 60	For two or multi field constructions with aluminium flat frame fastener in 60mm length
PC 2560-12 AF 120	For two or multi field constructions with aluminium flat frame fastener in 120mm length

The aforesaid information and our application technological advice in words, written and through tries, are carried out to the best of one's knowledge. This information is non-binding advice even in regards to property rights of third parties. Our advice does not release you from your responsibility to proof self dependently our current advices - especially our safety data sheets and technical information - and to test our products regarding to applicability for the intended system and use. Application, use and handling of our products - produced based on our application technological advice - take place out of our control and therefore you are solely responsible. The sales of our products is effected at our current general sales and delivery conditions.