

1.4.1.1/1

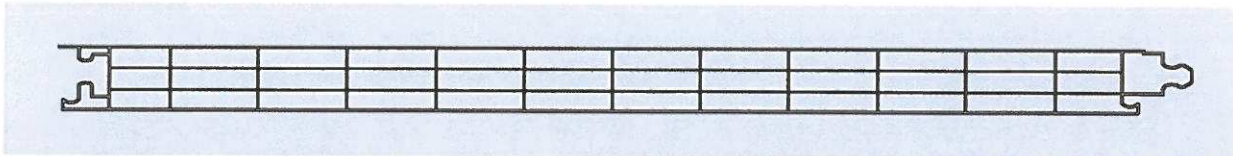
Translucent Building Elements

Product properties - physical properties

Stand: 06/14

Up-Value 1.40 to 1.70 W/m²K

Depending on horizontal or vertical installation situation as interior and exterior application according to DIN EN ISO 6946:2008 / DIN EN ISO 10077-2:2008



Flammability classifications:

PC 1530-4
PC 2530-4
PC 3530-4

fire class B1 according to DIN 4102
fire class B2 according to DIN 4102
fire class B-s2, d0 DIN EN 13501

Building width:

500 mm +/- 1 %

Thickness:

30 mm +/- 1 %

Weight:

approx. 3.40 kg/m²

Number of layers:

4 layers / 3 chambers

Modulus of elasticity:

2,400 N/mm²

Coefficient of linear expansion:

0.065 mm/m/°C

UV admission:

< 1 %, wavelength until 380 nm stopped almost a 100 %

Production tolerances:

s. General information

Versions:

Standard:

Colours: crystal, opal antiblind

Colour:



Available in any solid colour similar to RAL.
The Color version can be delivered with a minimum quantity of 300 m² without separate surcharges for colour change.

U-Values:

Isotherm- and temperature pattern from -10 °C outside and +20 °C inside at vertical assembly



Isotherms:

Red: 13 °C

Blue: 10 °C

Black: 0 °C

Installation situation interior:

Up-value 1.4 W/m²K vertical

Up-value 1.6 W/m²K horizontal

Installation situation exterior:

Up-value 1.6 W/m²K vertical

Up-value 1.7 W/m²K horizontal

The German building approval foresees the calculation of facade and roof areas according to the requirements of DIN 10077-2 (U_{cw}). If additional or divergent national requirements be asked to calculate the thermal protection, these must be respected.

Sound insulation:

approx. R_w 20 dB



1.4.1.1/2

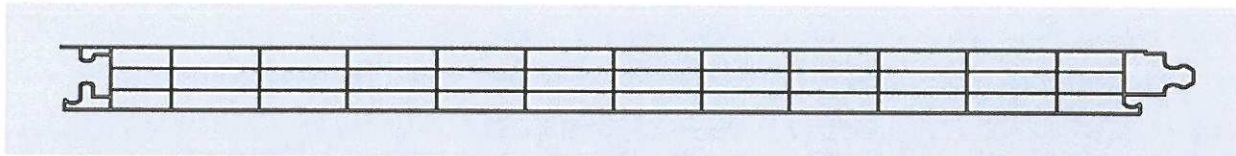
Product properties

Physical properties

Stand: 06/14

Up-Value 1.40 to 1.70 W/m²K

Depending on horizontal or vertical installation situation as interior and exterior application according to DIN EN ISO 6946:2008 / DIN EN ISO 10077-2:2008



Transmission:

Standard:

Colour: crystal

approx. 67 %

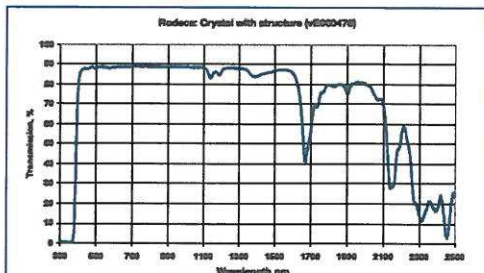
Colour: opal antiblind

approx. 50 %

Colour:

Depending on the colour, for example

Glass green opalized (antiblind) approx. 53 %



The Measurement of the transmission values was carried out with application of a natural day light lamp of 20,000 Lux in connection with a lux meter Lightmeter MS 1000-300 – measuring range 200 to 50,000 LUX) exemplarily on a 1 mm thick PC.

Solar gain values g

Standard:

Colour: crystal

approx. 69 %

Colour: opal antiblind

approx. 58 %

Colour:

Depending on the colour for example

Petrol (RAL 6027)

approx. 56 %

(The g-values are interpolated and may vary depending on the angle of sun shine incidence on building surfaces.)

The aforesaid information and our application technological advice in words, written and through tries, are carried out to best of one's knowledge. This information is non-binding advice even in regards to property rights of third parties. Our advice does not release you from your responsibility. To proof self dependently our current advices - especially our safety data sheets and technical information - and to test if our products in regards to applicability for the intended system and use. Application, use and handling of our products - produced from you based on our application technological advice - take place out of our control and therefore you are solely responsible. The sale of our products is carried out at our current general sales and delivery conditions. Please check before handling if our products are applicable for the intended purpose.

